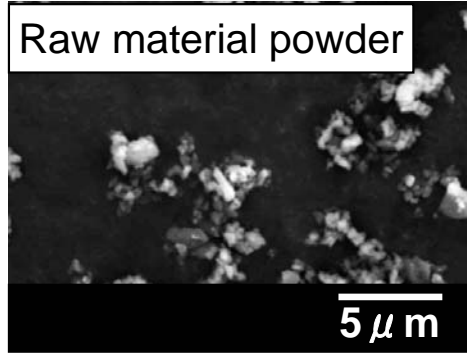


Ceramic Manufacturing : Powder processing

Raw material



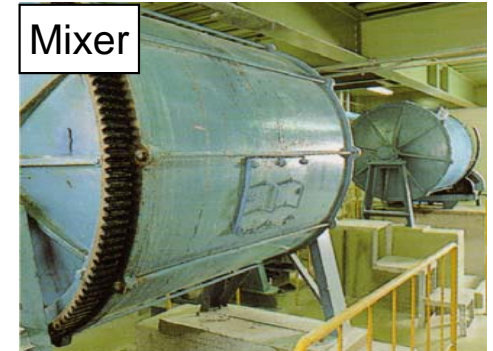
Grain size is less than 1 μm.
(1 μm = $\frac{1}{1000}$ mm)



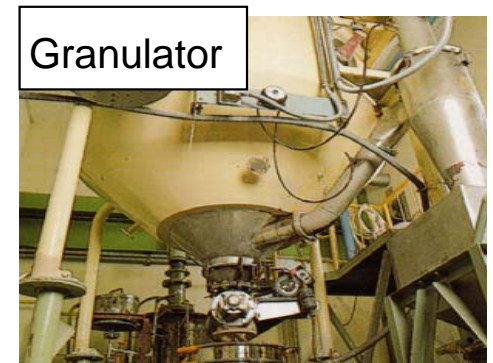
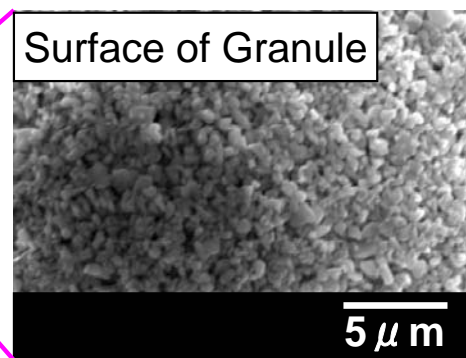
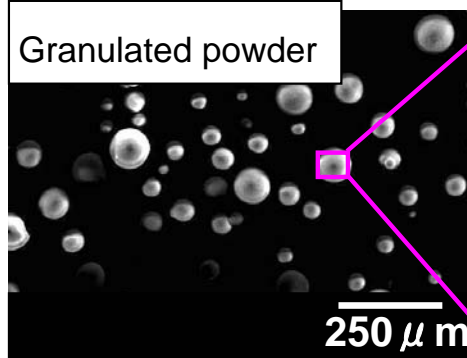
Grinding/Mixing



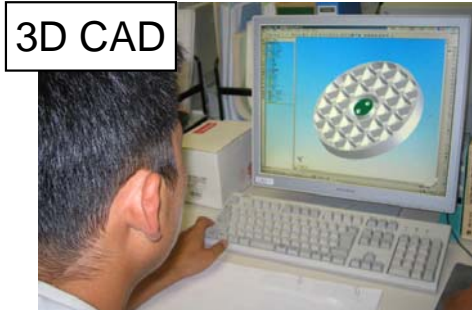
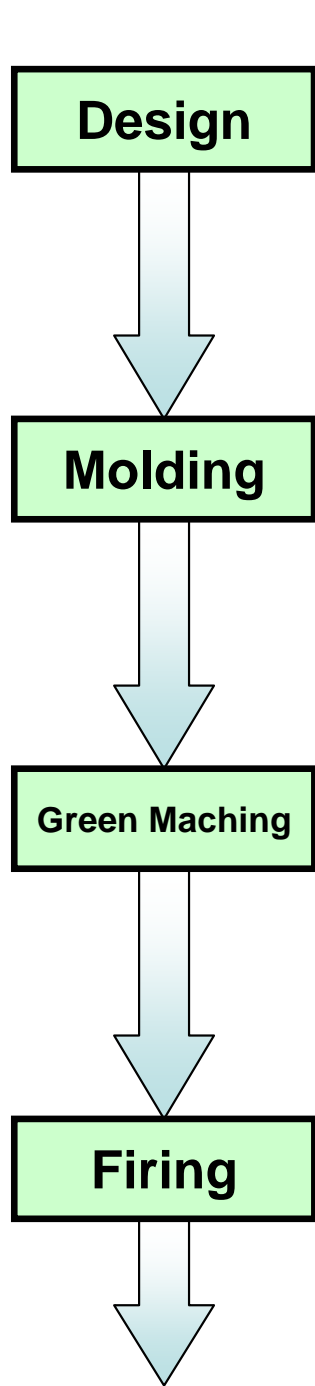
Granulated spherical powder of about 100 μm is made from fine powder.



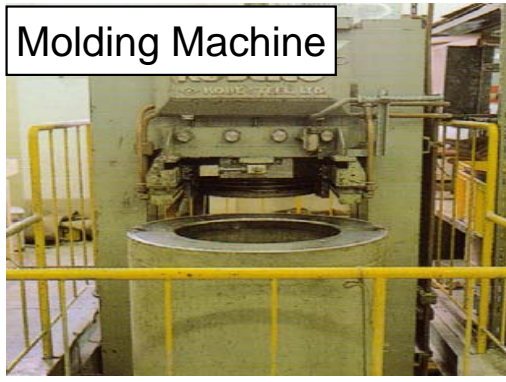
Granulation



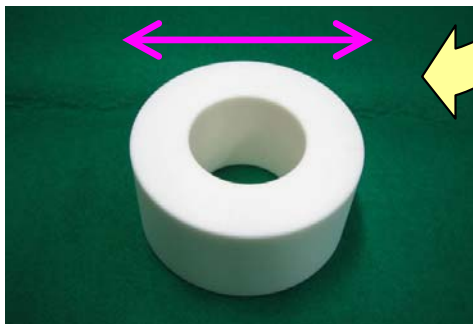
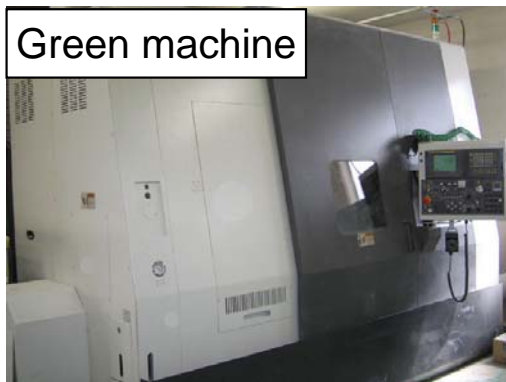
Ceramic Manufacturing: Before firing



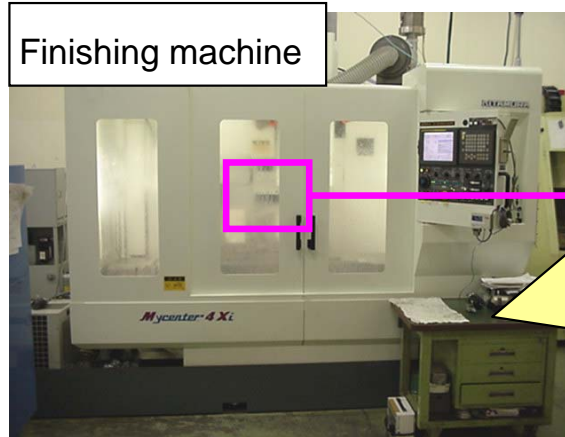
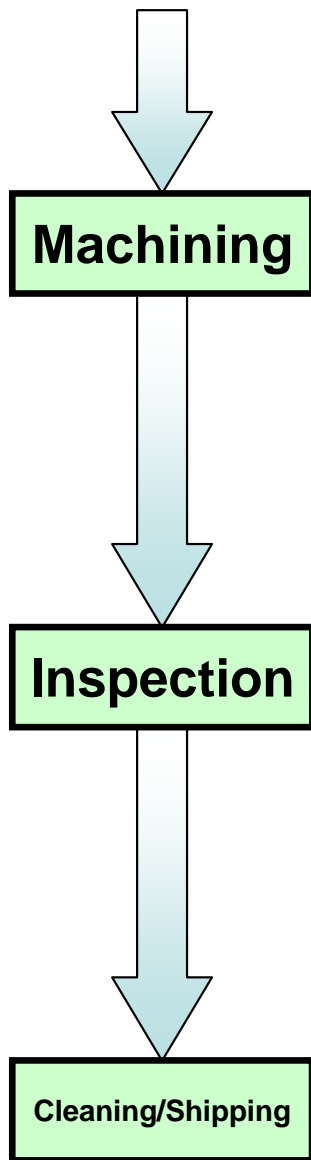
Mold granulated powder



Machine by cutting tool



Ceramic Manufacturing :After firing



It was Machined by diamond tooling



Measure precision by various method

